

## Machine introduction

### SMT Cleaning Machine



Pallet cleaning machine



stencil cleaning machine



Squeegee Cleaning Machine



Nozzle cleaning machine



PCB magazine cleaning system



PCB cleaner

## Machine introduction

### PCBA flux cleaning machine



PCBA batch type  
cleaning machine



PCBA water cleaning  
machine



PCBA inline cleaning  
machine



PCBA inline  
cleaning machine



DI water  
machine



Ion contamination  
tester

Recommond machine

# PCBA Batch Type Cleaning Macine

Model: AC510



AC510 PCBA Offline Cleaning Machine is an integrated high-end cleaning machine that is energy-saving, eco-friendly, and designed for batch cleaning. It can automatically complete the cleaning, rinsing, and drying functions. This machine is mainly used for cleaning multi-variety and small and medium batch PCBA boards of high-end products in industries such as military, aerospace, communications, intelligent instruments, and automotive electronics. It can effectively clean the organic and inorganic pollutants such as the rosin flux, water-soluble flux, and no-clean flux/solder paste residue on the surface of SMT/THT PCBA after soldering.

## Machine Structure

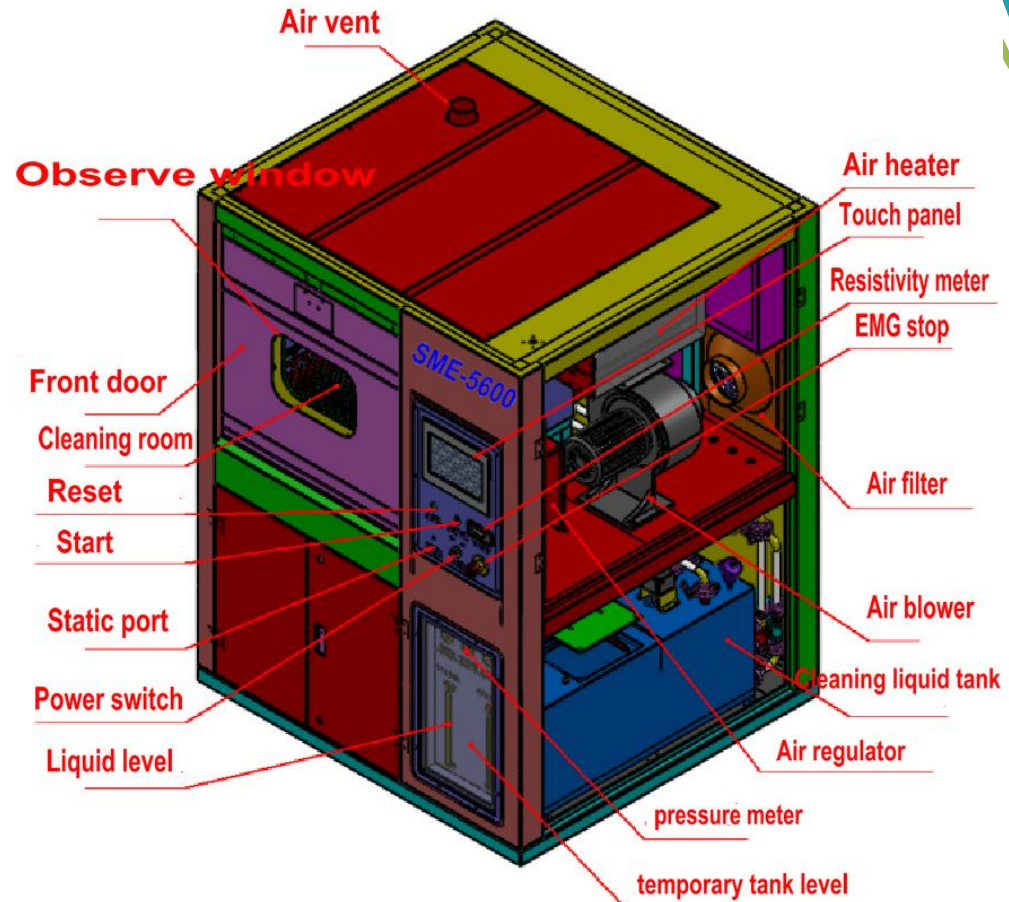
### 1. Main Modular

The device has an integrated structure and can automatically complete the cleaning, rinsing, and drying processes in one chamber.

1. Cleaning: chemical liquid cleaning, cleaning time, and temperature can be set.
2. Rinsing: multiple rinses with DI water, rinsing time and number of rinses can be set.
3. Drying: hot air drying, drying time and stability can be set.

### 2. main flow chart

put in PCBA → liquid wash → liquid take back → DI water rinse 1 → DI water rinse 2 → DI water rinse N → Hot air blow dry → take out PCBA



## Machine modular in details



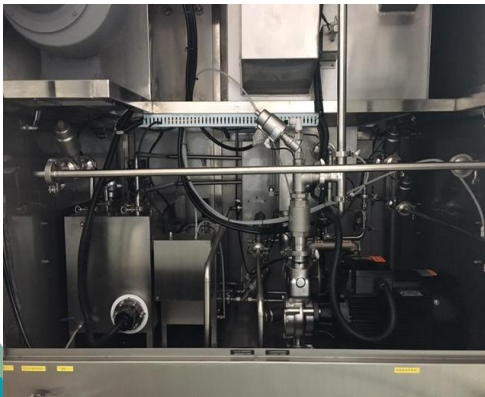
big wash cabinet



wash basket



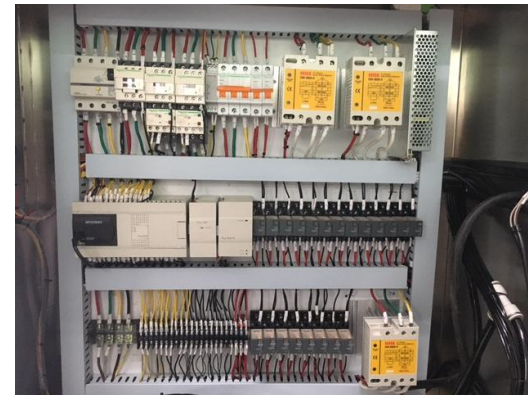
2 layers seal and observe window



Inner pipes



wash&rinse filters



Electric control box

## Machine Spec

S/N	Item	Spec
1	wash basket	L610*W560*H100(mm), 2 layers
2	liquid tank capacity	60L
3	concerntrate liquid tank capacity	30L
4	temporary tank capacity	18L
5	clean time	10~20min(0~99min adjustable)
6	rinse time	1~3min/times (0~10min adjustanble)
7	hot air dry time	15~30min (0~60min adjustable)
8	rinse times	3~5times (1~9 times adjustable)
9	cleaning liquid temp	room temp~75°C
10	rinse DI water temp	room temp~75°C
11	hot air dry temp	room temp~99°C
12	liquid tank heater power	9KW

## Machine Spec

S/N	Item	Spec
13	temporary tank heater power	6KW
14	Hot air heater power	7.5KW
15	Resistivity range	0~18MΩ
16	electric pump	4.0KW
17	air pump	ARO 1 Inch
18	liquid Spray pressure	0~5kgf/cm <sup>2</sup>
19	liquid filter	1um
20	DI water filter	1um
21	Air vent size	φ100XH30(mm)
22	Power/air supply	AC380V,50/60HZ,65A /0.5~0.7Mpa,200~400L/Min
23	Machine size	L1300xW1200xH1850 (mm)
24	Machine weight	600KG

**After cleaning test**

**After cleaning check method**



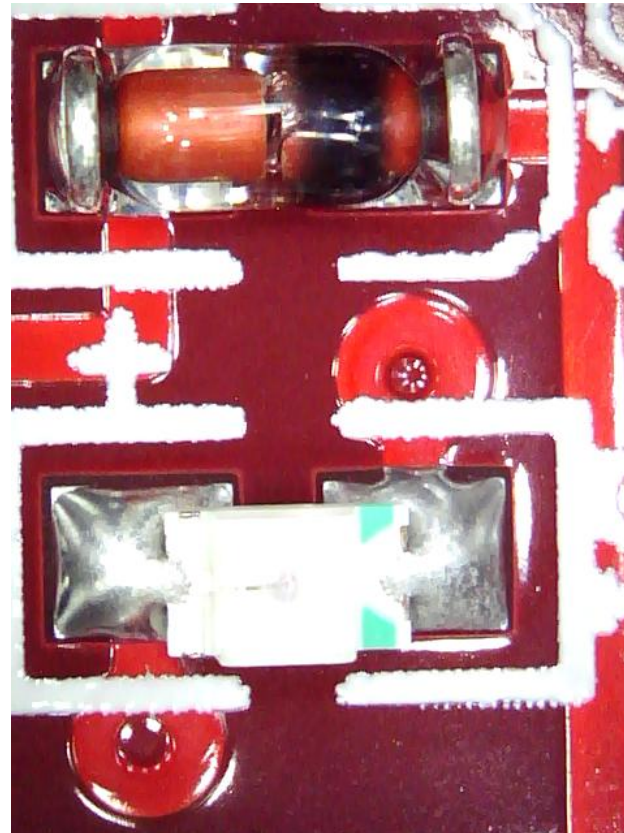
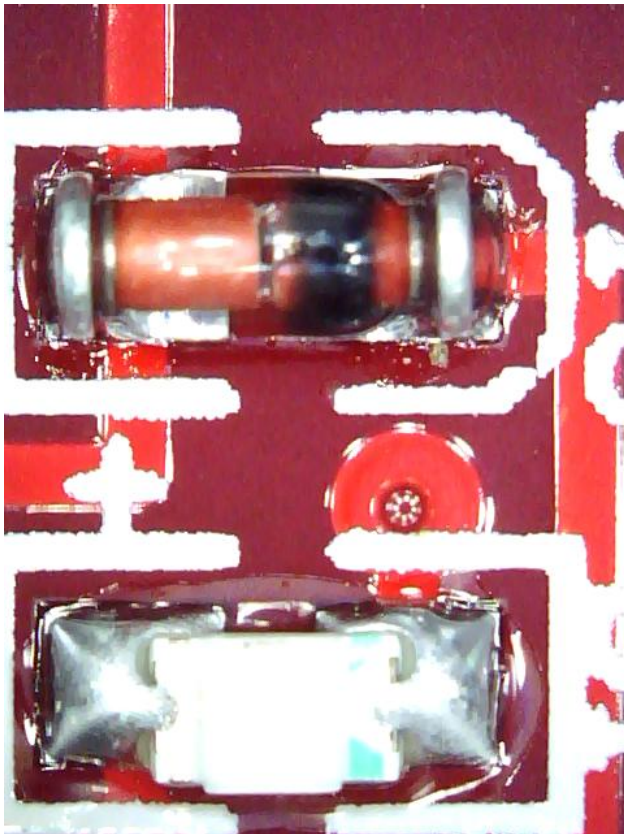
**method 1:  
Microscope**



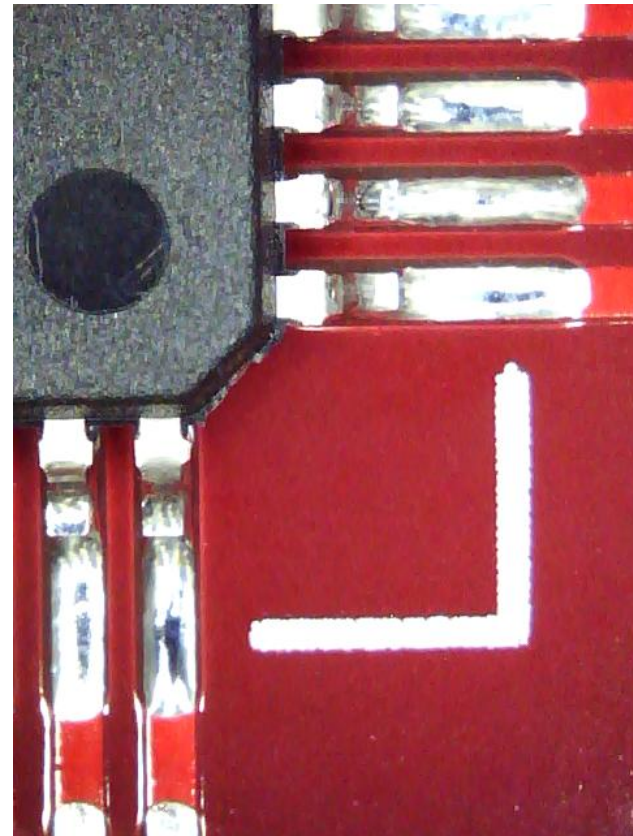
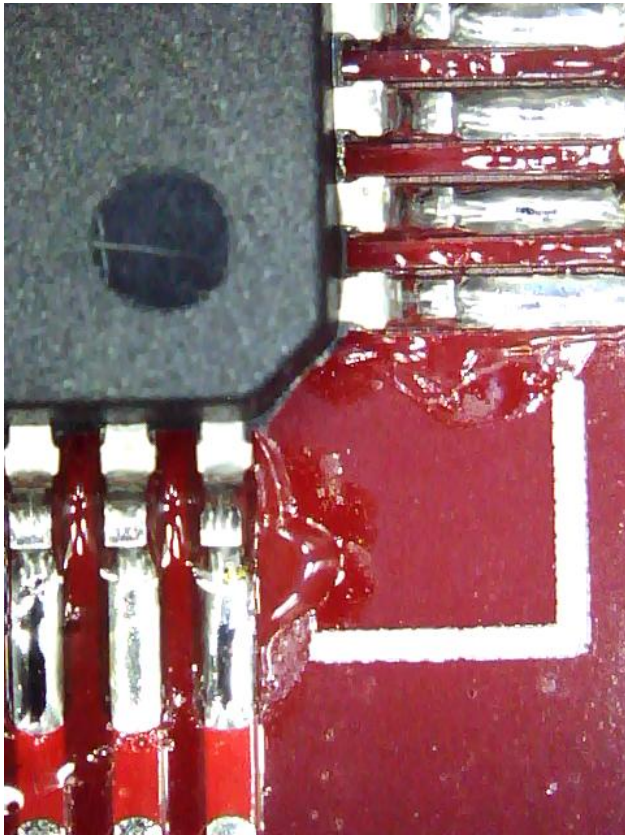
**method 2:  
Ion contamination tester**



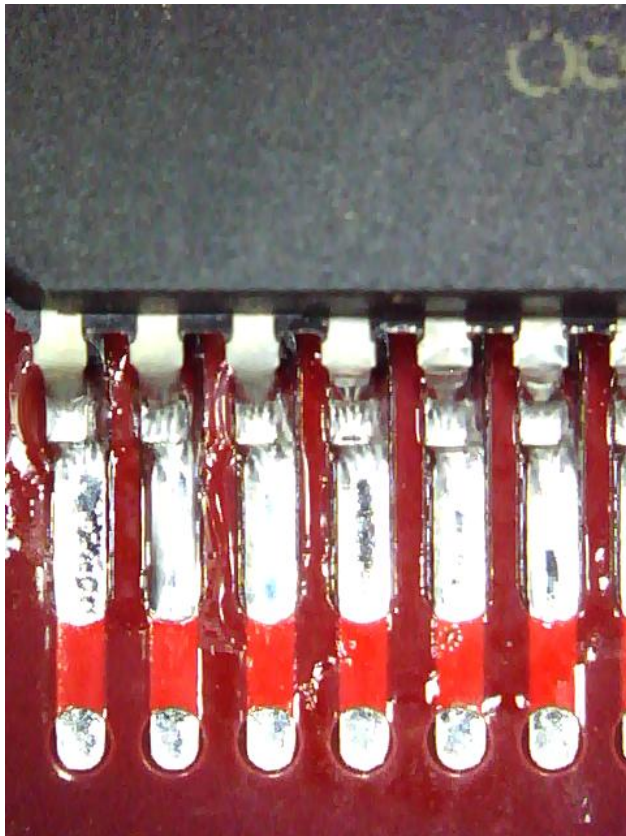
## Comparison before and after wash -1



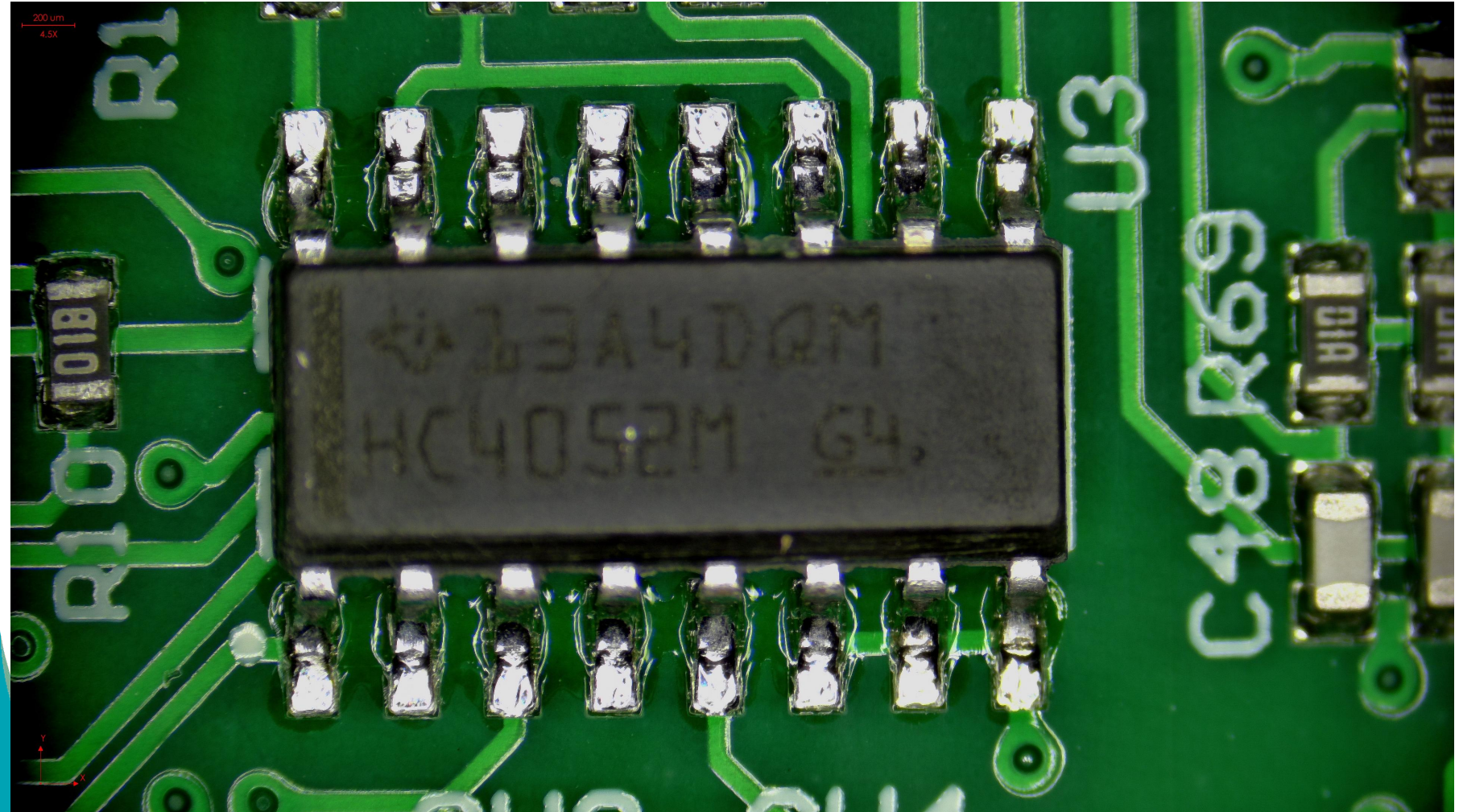
## Comparison before and after wash -2



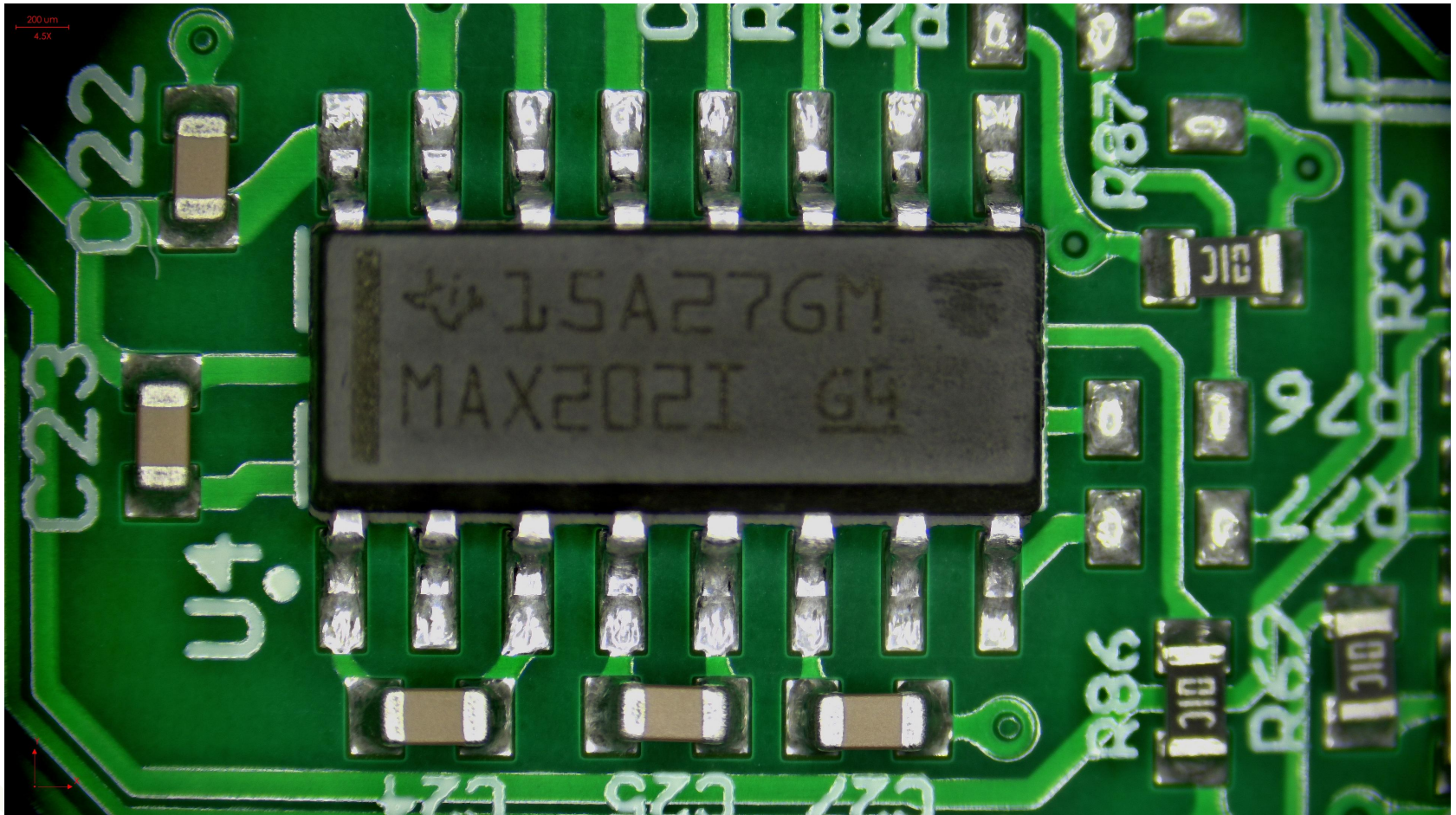
## Comparison before and after wash -3



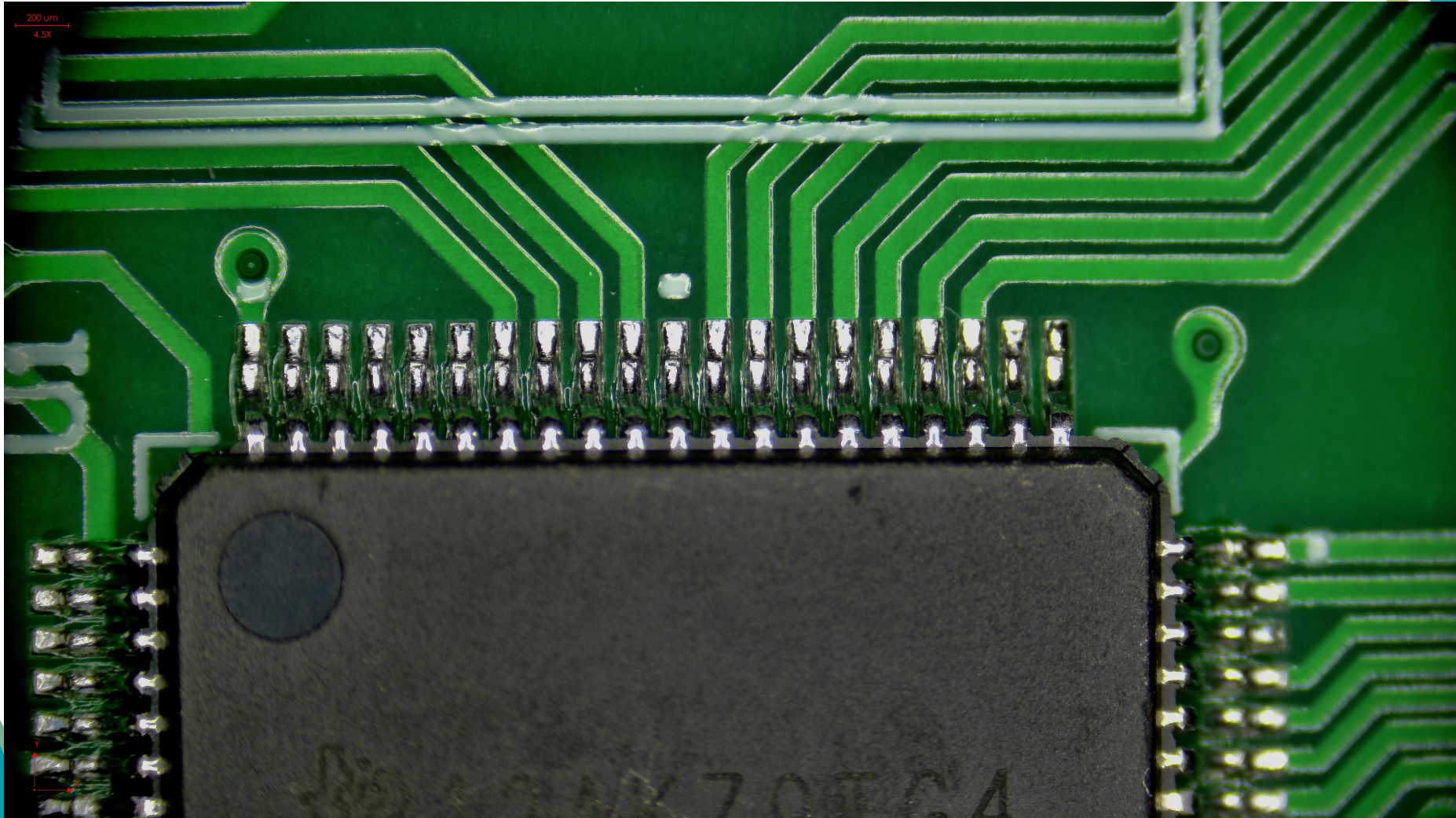
Comparison before clean-4



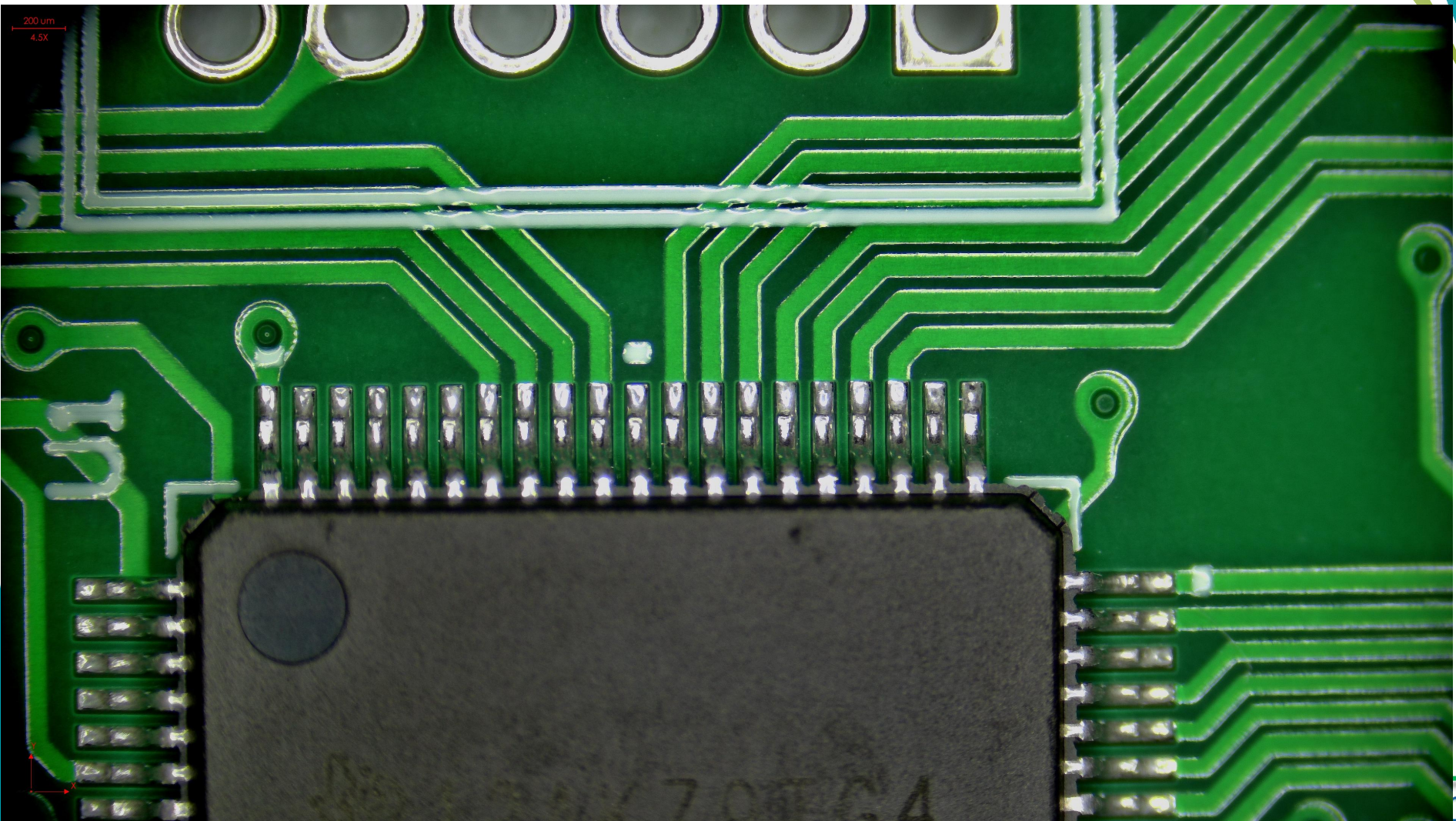
## Comparison after clean-4



## Comparison before clean-5



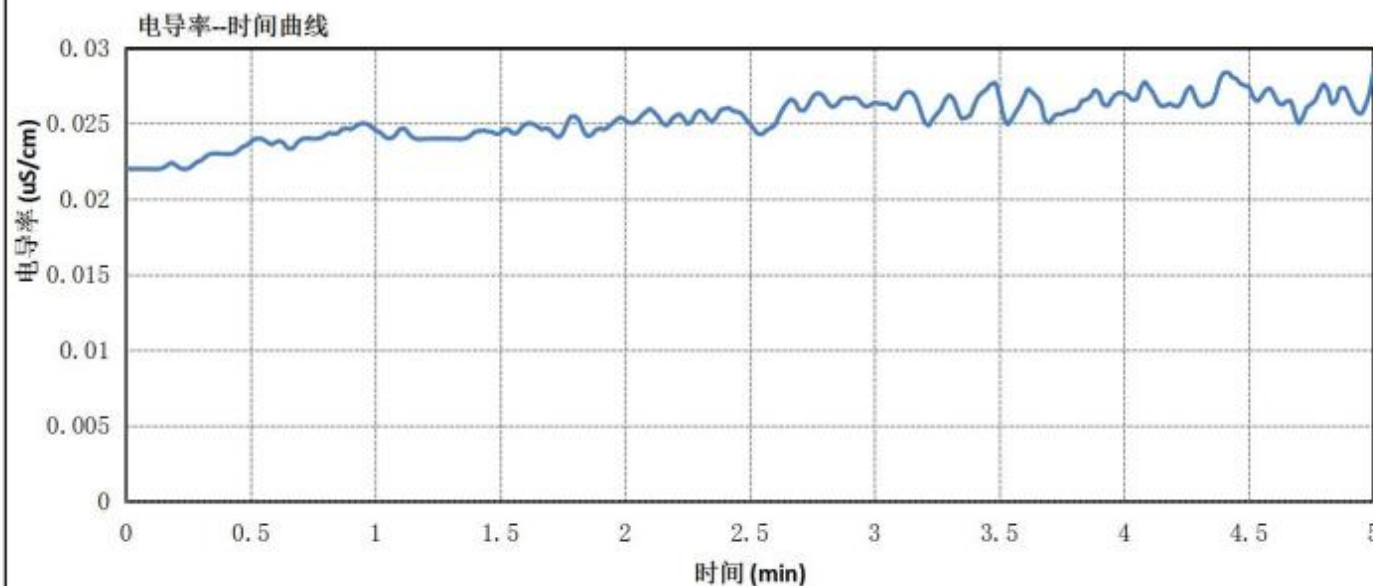
## Comparison after clean-5



## Ion contamination test

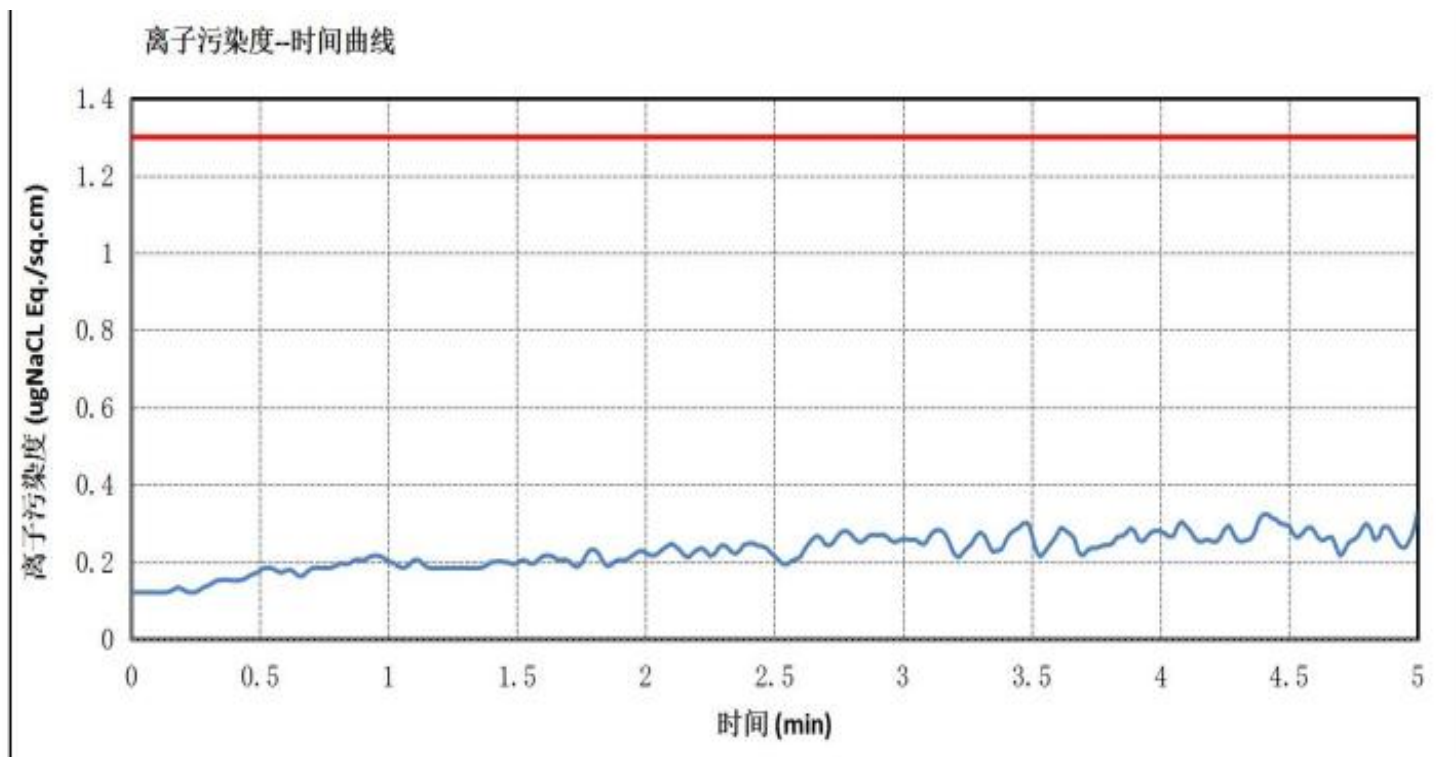
### 离子污染度检测报告

仪器型号	AC100	序列号	CNKS2016001
产品名称	L0704	检测日期	2023/3/4
板面实际面积	170.00 sq. cm	修正后面积	170.09 sq. cm
测试液温度	29.5 °C	测试时长	5.00 min
测试方法	静态测试	操作者	江正鑫





## Ion contamination test



### 测试结果判定

选用标准	标准要求 (ugNaCl Eq./sq.cm)	测试结果 (ugNaCl Eq./sq.cm)	判定
用户自定义	---	---	---
DEF-STD-10/03	1.3	0.325	<b>良品</b>

## Welcome Inquiry

**Please visit**

**[www.smthelp.com](http://www.smthelp.com)**

**Find us more**

**<https://www.facebook.com/autoinsertion>**

**Know more our team**

**<https://www.linkedin.com/company/smtmachine>**

**Welcome to our factory in Shenzhen China**

**See more our machine please Google**

**[Auto Insertion](#)**

**Youtube**

**<https://www.youtube.com/c/Smthelping>**

**Looking forward to your email**

**[info@smthelp.com](mailto:info@smthelp.com)**